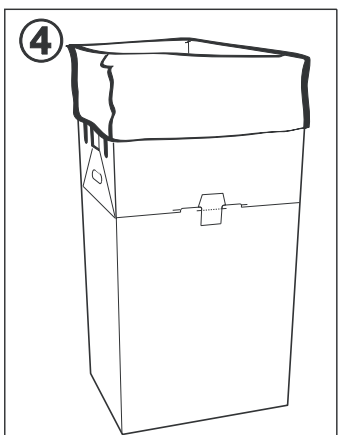
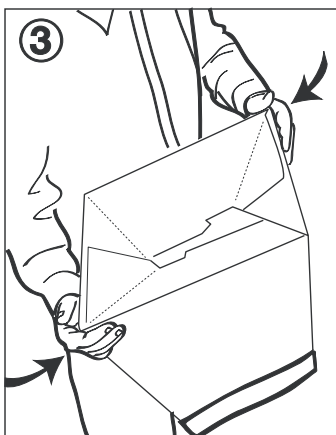
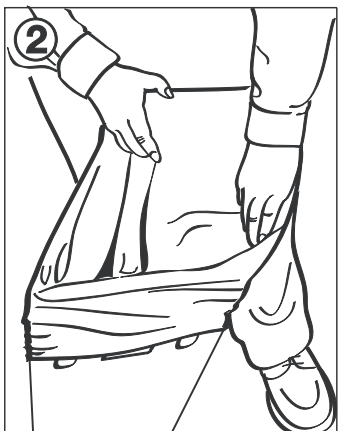
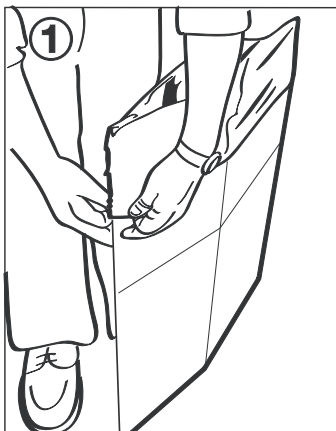


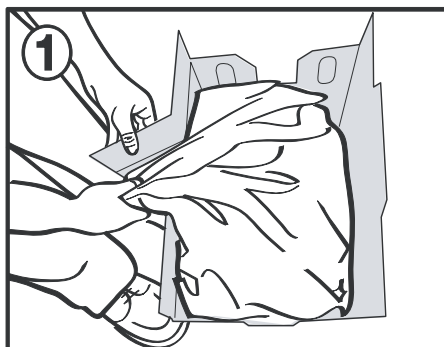


# Instructions for 4G Safe®

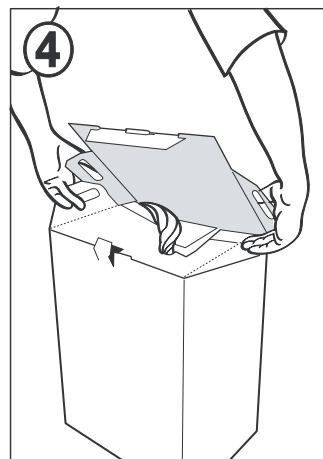
## PREPARATION



1°) Place the bag through the hole

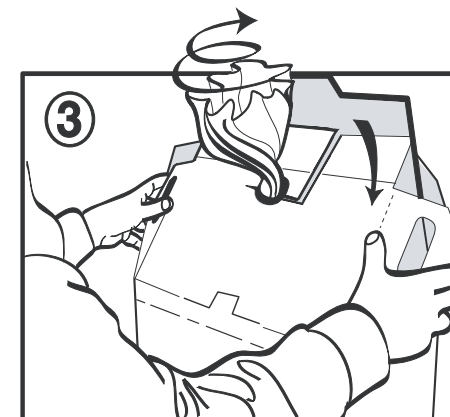
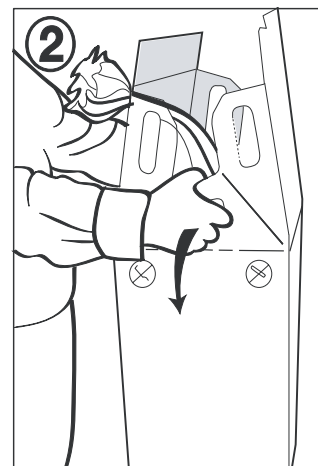


4°) To close the packaging, put down the lid while pushing aside the handles

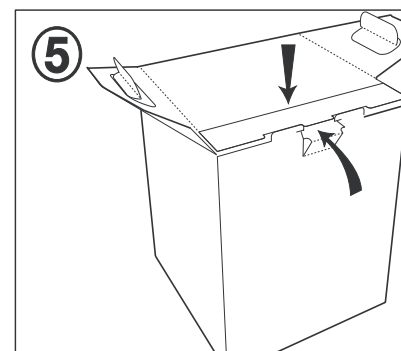


## CLOSING

2°) To make the folding easier, firstly pull out the 2 flaps with handles



3°) Twist top of bag and flatten it. Then fold the safety flap down



5°) Permanent closure is obtained by inserting the tongue